

## House Wines GLASS | BOTTLE

### WHITE

**ROQUENDE, CHARDONNAY, FRANCE** | 4.9 | 26

A fresh and fruity bouquet with a long aftertaste

**ROQUENDE, SAUVIGNON BLANC, FRANCE** | 4.9 | 26

Aromas of white fruits with a fresh, soft, and mild taste

### ROSÉ

**ROQUENDE, ROSÉ, FRANCE** | 4.9 | 26

Light and fresh rose with lovely aroma's of raspberries and strawberries

### RED

**ROQUENDE, MERLOT, FRANCE** | 4.9 | 26

Full, rich, dark red wine with aromas of blackberries and cherries, soft and mild

**SANGRIA GLASS** | 5.5 | 0.5 LITER: 17 | LITER: 25.5  
Summer surprise with fruit



## WHITE WINES | BOTTLE

**CUATRO RAYAS, VERDEJO BIO, SPAIN** | 29.5

Full tropical fruit, aromatic, fresh sour with a full aftertaste

**MUD HOUSE, SAUVIGNON BLANC, NEW-ZEALAND** | 32

A refreshing, fruity wine with a mild after taste

## ROSÉ WINES

**GÉRARD BERTAND, GRIS BLANC, FRANCE** | 29

A light, fresh and fruity wine

## RED WINES

**VINA BAROJA, CRIANZA, SPAIN** | 27

Oak tones, fruit from the tempranillo grape, full and round

**EL MOLINO RESERVE, MALBEC, ARGENTINA** | 32

A intense and fruity malbec with floral tones, red fruit and vanilla

## SPARKLING WINES GLASS | BOTTLE

**PROSECCO PRONOL CUVÉE FRIZZANTE, ITALY** | 7.5 | 29.5

This lovely fresh prosecco has an elegant taste of pears, apple and lemon

**VALLFORMOSA CLASSIV BRUT, SPAIN** | 32

Aroma's of ripe melon, banana and green apples.

## Special Gins

**GORDON'S PINK GIN** with strawberry | Mint | 8.5

**BOBBY'S GIN** with orange | 8.9

**BOMBAY SAPPHIRE** with lime | 8.6

**HENDRICKS** with cucumber | 9.6

COMBINE WITH:

TONIC | 3.2

DOUBLE DUTCH | 3.9

GINGER ALE | 3.5



## Coffee & More

**LATTE SPECIAL CREATIONS** Caramel | 5.5 | Chai | 4.5

**LATTE MACCHIATO** | 4.5

**COFFEE | ESPRESSO** | 3

**CAPPUCCINO | MACCHIATO** | 3.5

**ICE COFFEE** Frappé | Home Made | 4.9

**FLAT WHITE** | 4.9

**DOUBLE ESPRESSO** | 4.9

**BABYCCINO** | 2

**SPECIAL COFFEE** Irish or French or Spanish or Italian or D.O.M. | 9.9

**TEA** | 3.2

**FRESH MINT TEA** | 3.9

**FRESH GINGER TEA WITH LEMON** | 4.2

**HOT CHOCOLATE** | 3.5

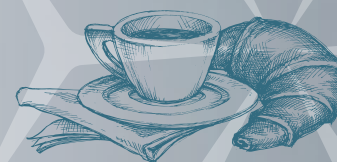
**WHIPPED CREAM** | 0.8



## Good with the Coffee

**CAKES** Lemon cheesecake / Chocolate / Apple / Carrot | 4.9

**CROISSANT** Plain / Jam / Nutella / Cheese | From 3



## Soda & Juices

**PEPSI | MAX | SOURCY R&B | 7 UP | SISI | LIPTON ICE TEA**

| 3.2 • 0,50 cl | 4.9

**CHILDREN** Sodas or

Juices 0,25 cl | 1.6

**FRESH ORANGE JUICE**

small | 2.9 • medium | 4.2

**LEMONDE | STRAWBERRY |**

**RASPBERRY** | 0,50 cl | 4.5

**SOURCY** Still of

Sparkeling | 100 cl | 5.9

**PAULANER** Weissbier | 4.8

**DESPERADOS** | 6.5

**HEINEKEN 0.0%** Alcohol free | 3.6

**BRAND WEIZEN 0.0%**

Alcohol free | 4.2

## Smoothies

**STRAWBERRY | BANANA**

**ORANGE** | 5.9

**GINER | ORANGE** | 5.9

## Strong Alcohol

**RUM WHITE OR BROWN |**

**BACARDI LIMÓN | VODKA**

**| GIN | JAMESON |**

**| COGNAC V.S. | CALVADOS |**

**TEQUILA | LIMONCELLO** | 4.9

**JACK DANIELS** | 8.5

**COGNAC V.S.O.P. | JOHNNY**

**WALKER BLACK** | 8.5

**JONGE Jenever | VIEUX |**

**APFELKORN | BESSENJenever |**

**JÄGERMEISTER**

**CAMPARI | RED PORT** | 4.5

## Likeuren

**SAMBUCA | AMARETTO | TIA**

**MARIA | BAILEYS | LICOR 43**

**GRAND MARNIER | COINTREAU**

**| D.O.M | DRAMBUIE |**

**SOUTHERN COMFORT** | 5.5



## Morning break TILL 16 O'CLOCK

### SOLBEACH BREAKFAST (TILL 12 O'CLOCK)

Bread | Cold cuts | Egg |  
Croissant | Fresh orange juice | Coffee / Tea | 14¾  
**AMERICAN PANCAKES** ✓ Honey | Fruit | 8¾  
**CROISSANT** ✓ Plain / Jam / Nutella / Cheese | from 3  
**YOGHURT** ✓ Cruesli | Fruit | Honey | 7½  
**VARIOUS TYPES OF FRIED EGGS** Plain /  
Bacon / Cheese / Ham | From 8



## Sandwiches TILL 16 O'CLOCK

**FAMILY PANINI** 4 persons | Ham | Cheese | Tomato | Fried  
onions | Pickle | Mustardmayo | Onion Cheese Baguette | 24½  
**CARPACCIO** Asian Style | Parmesan cheese | 9¾  
**PANINI** Ham | Cheese | 7  
**GOAT CHEESE** ✓ Beetroot | Vegetablechips | Mustardmayo | 8¾  
**THAI FISH BURGER** Chili sauce | 10  
**ENCHILADA** Chicken | Guacamole | Cheddar | 9¾  
**HOT DOG** Sausage | Mustard | Baked onions | 9  
**DUTCH MACKEREL SALAD** From the north-sea | 8¾  
**OLD CHEESE** ✓ Mustard mayo | 6¾  
**KROKET (1 PCS)** Classic, but with a twist | 8½  
**VEGANKROKET (1 PCS)** Classic, but with a twist | 8½

## Bits and Bites!

• **BREAD** ✓ Herb butter or Guacamole or Aioli | From 7½ •  
**NUTS** ✓ Mixed | 3¾  
**OLIVES** ✓ Marinated | 4  
**CALAMARIS** Aioli | Lime | 8¾  
**SPINACH CHEESE CROQUETTES** ✓ 6 pcs | 7¾  
**NACHOS** ✓ Guacamole | 6¾  
**NACHOS** ✓ Cheddar | Tomato | Spring  
onions | Jalapeño's | Guacamole | 9½  
**JAPANESE CHICKEN BITES** Chilli sauce | 6 pcs | 8¾  
**VEGETARIAN BITTERBALLEN** ✓ Mustard | 8 pcs | 8  
**BITTERBALLEN** A dutch speciality | 6 pcs | 8  
**PESCADITOS FRITOS** Fried Smelt fish from the Wadden Sea | 7½  
**FRIES** ✓ Mayo | 4½



## Beachclub planken

**PLANK HOLLAND** Old Cheese | Sausage  
| Pickles | Bitterballen | 16¾  
**PLANK MIX** Olives | Japanese Chicken Bites |  
Bitterballen | Calamaris | Merguez | 16¾  
**PLANK VEGGIE** ✓ Cheese Sticks | Olives |  
Spinach Cheese croquettes | Bruschetta Tomato |  
Mixed nuts | 16¾



### SOLBEACH IS AMBASSADOR OF THE NORTH SEA FOUNDATION. WHAT DOES THAT MEAN?

Why would we get fish from far away when we can get top  
quality fish from our own harbour. Solbeach is working with  
sustainable and local products that you can enjoy everyday!



## Soup

**TOMATO** ✓ Basil | Crème Fraîche | 7¾  
**SOUP OF THE DAY** | 7¾

## Salads

**THAI** Fish cubes | Mango-Childressing | 16½  
**CAESAR SALAD** Anchovies | Bacon | Egg | Croutons | 15½  
+ Extra Chicken | 2.5  
**GOAT CHEES** ✓ Beetroot | Vegetablechips | Mustardmayo | 16½  
**VEGAN** ✓ Lentils | Chickpeas | Roast vegetables | Spicy vegan  
mayo | 16½

## Main Courses

**SPARERIBS** Marinated | Fries | Salad | 19½  
**SATAY** Chicken | Rice | Salad | 18½  
**ENCHILADA** Chicken | Guacamole | Cheddar | 17½  
**THAI CURRY** ✓ Vegetables | Lemon rice | 16½  
**THAI CHICKEN CURRY** Vegetables | Lemon rice | 19



## North Sea Specials

**COD** Baked in the oven | Fresh herbs |  
Lemon rice | Dille sauce | 19¾  
**MUSSELS** Bread | 2 dips | 19¾  
**FISH & CHIPS** The original | Ravigottesauce | 19½  
**DAILY SPECIAL** Fresh Fish from the Local Harbour | Daily price

## Bbq burgers

**SOLBURGER CLASSIC** Beef | Smokey  
sauce | Fries | Bacon | Cheese | 18  
**VEGA** ✓ The beyond burger | Cheese | Fries | 18

## For kids only!

**PANINI** Ham | Cheese | 3¾ (till 16.00 o'clock)  
**SANDWICH** Nutella / Jam / Peanut butter | 3½ (till 16.00 o'clock)  
**HAMBURGER** Fries | Applesauce | 8½  
**CAPTAIN SOL** Golden Chicken nuggets | Fries | Applesauce | 8¾  
**FISH & CHIPS** The original | Ravigottesauce | 9¾

**ICECREAM** Apple Pear | 2½  
**ICECREAM** Choco Cookie Dough / Strawberry / Mango passion /  
Blueberry Cheesecake | 3½

## Sweet Side

**BROWNIE** Vanilla ice cream | 8½  
**CAKES** Lemon cheesecake / Chocolate / Apple / Carrot | 4.9  
**AMERICAN PANCAKES** Honey | Fruit | 8¾  
**COUPE** Vanilla ice cream | Chocolate sauce | Whipped cream | 7

**VEGETERIAN** = ✓ **LACTOSE FREE** =  **GLUTEN FREE** =   
**PLEASE NOTE, IT MAY CONTAIN TRACES**  
**IF YOU HAVE ANY ALLERGIES PLEASE TELL THE STAFF**

## Cook it yourself Bbq ORDER FROM MINIMUM 2 PERSONS

BARBECUES ARE SERVED WITH: DIVERSE SAUCES | CORN |  
PASTA SALAD | COLESLAW

**MEAT** Chicken skewer\*\* | Beef Burger\*\* | Turkey  
Merguez\*\* | Steak\*\*\* | Cheddar Chicken sausage | 24.9 pp  
**FISH\*\*\*** Cod | Red gurnard | Sea bream |  
Gamba skewer | Mussels | 24.9 pp  
**MIX** Chicken skewer | Beef Burger | Cod  
| Gamba skewer | Zucchini | 22.9 pp  
**VEGGIE** ✓ Burger\*\* | Portobello\*\* | Tofu skewer\*\* |  
Halloumi cheese\* | Zucchini\*\*\* | 22.9 pp  
**KIDS** Hamburger\*\* | Turkey Merguez\*\* | Fries |  
Applesauce | 10

## Bbq Side Dishes

**FRIES** ✓ Mayo | 4½  
**HALLOUMI CHEESE** ✓ | 4  
**VEGETABLES** ✓ | 4  
**COLESLAW** ✓ | 3½  
**PASTA SALAD** ✓ | 4  
**BREAD** ✓ Herb butter / Guacamole / Aioli | From 7½  
**GREEN SALAD** ✓ 3¾

## Bbq Desserts

**MARSHMELLOW ROASTING** 6 pcs | 3½  
**CHOCOLADE FONDUE** Strawberry | Banana |  
Marshmallow | +/- for 4p | 14½

## Cocktails

**MIMOSA** Prosecco | Orange juice | 8.9  
**MOJITO** Rum | Lime | Fresh Mint | Soda | 9.5  
**VIRGIN MOJITO** Lime | Fresh Mint | 7up | 8

• **CAIPIRIÑHA** Cachaça | Import from Koos •  
• & Frank | Lime juice | Sugar | 8.9 •

**STRAWBERRY MOJITO** Strawberry | Rum | Fresh Mint | Soda | 9.9

**LONG ISLAND ICE TEA** Tequila | Gin | Vodka |  
Rum | Triple sec | Lemon juice | Cola | 9.9

**APEROL SPRITZ** Ice cold | Oranje | 8.9

**CAIPISODA** Ginger liqueur | Lemon juice | Soda | 9.9

• **FRESH FRUITCOCKTAIL** Alcohol free | 5.9 •

## Tap Water

At solbeach we feel that being able to  
order a glass of tap water,  
instead of water out of the bottle is very important.  
The production, transportation, and the packaging are all very  
stressful on the environment. We offer you tap water with  
payment. All the profits will go to the Katemo school in Zambia.



**GLASS OF WATER 0,75**